

Gasket Man cc

Data Specifications Sheet

SLS

Pure exfoliated graphite with a stainless steel foil reinforcement for improved handling and load-bearing characteristics. The excellent conform ability of graphite means that the material is suitable for applications where bolt load is limited or flanges are damaged.

Physical Properties / Technical Data

The information represents typical values which can vary according to the application. These values do not constitute a performance guarantee. Users should determine, prior to use, the suitability of this material for their particular application

Compressibility ASTM F 36 A	40%	
Recovery ASTM F 36 A	15%	
Stress relaxation DIN 52913	50MPa, 16h/3000C	min 48MPa
Klinger cold/hot compression (50MPa)	Thickness decrease 230C	40%
	Decrease at 3000C	1.5%
Gas leakage according to DIN 3535/6	<0.5ml/min	
Chlorides (soluble)	<40ppm	
Fluoride and Chloride Content	<200ppm	
Density	1.0g/cm ³	
Purity	min 98%	

**Typical values for 1.5mm thick material

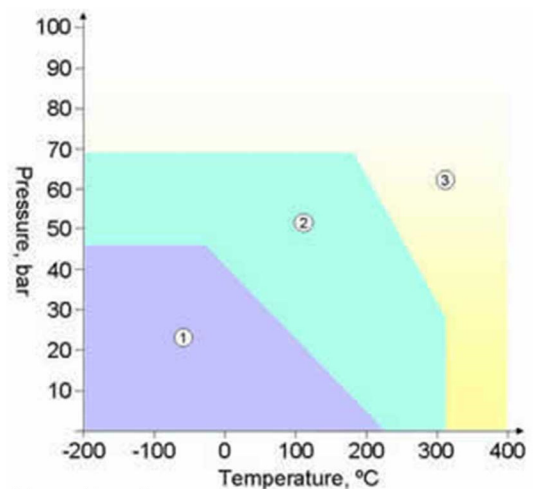
General Properties

Excellent resistance to steam
Resistant to virtually all media
Outstanding resistance to high and low temperature
High compressibility
Good leakage properties
Unlimited storage life
Easy to cut

Availability

Sheeting (m): 1.0 x 1.0

Thickness (mm): 0.45, 0.8, 1.0, 1.5, 2.0, 3.0



- Key**
1. Usually satisfactory without reference
 2. Usually satisfactory, but suggest you refer to Gasket Man for advice.
 3. Caution: May be suitable but essential that you refer to Gasket Man for advice.

Unit C3
Dekema Park
284a Dekema Road
Wadeville
1422

Tel: 011 865 4347
Fax: 086 670 6773
Cell: 082 925 1497

Should you require any more information please contact us for support.
You can also mail us at:
amanda@gasketmanonline.co.za